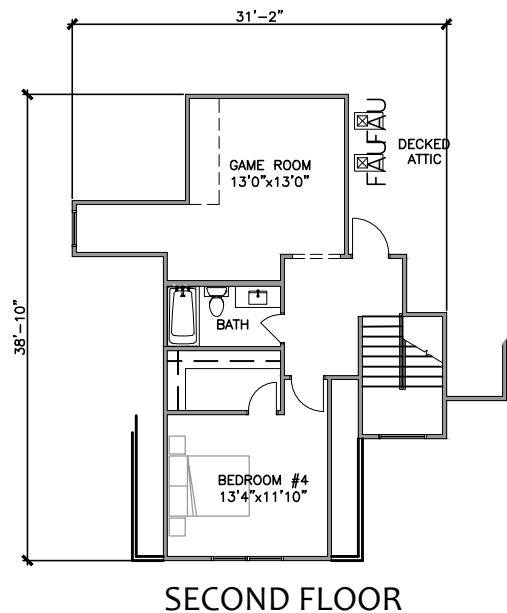
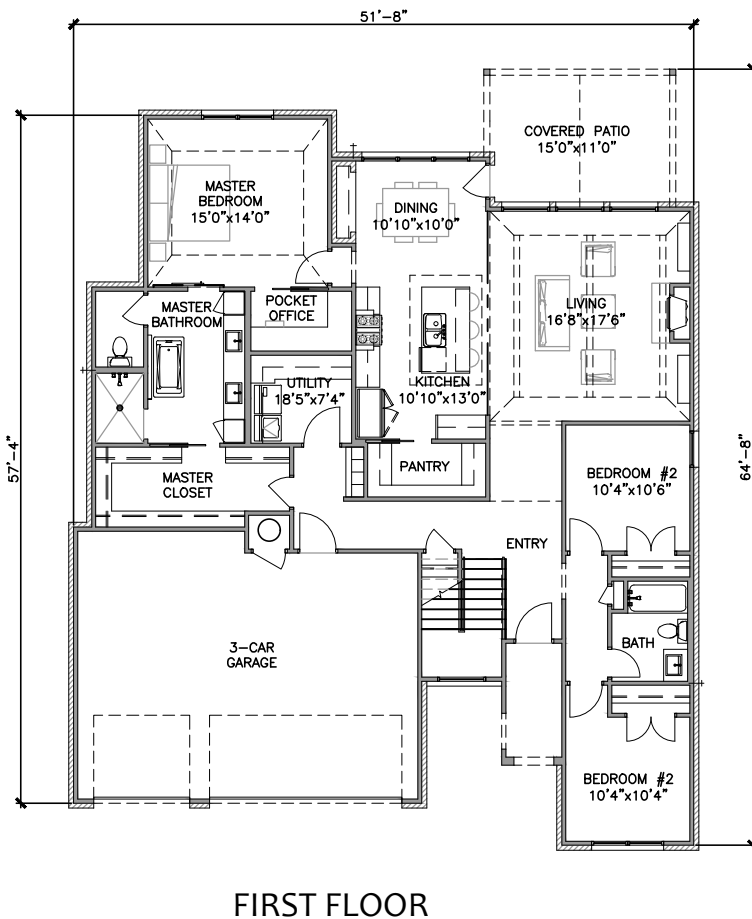


THE SHIBE

LIGHT BRICK & STUCCO EXTERIOR



1st: 1,939 SF • 1st OVER VENEER: 2,013 SF

2nd: 628 SF • TOTAL: 2,567 SF



AMY LEIGH PROSSER
 cell: 918.805.9713
 APROSSER@CCTULSA.COM
 www.ironstylehomes.com

CHINOWTH
 & COHEN
 REALTORS®

